

## PSYCHOLOGY COURSE – LEVEL 3 AWARD



The **Psychology - Level 3 Course** is designed for people who wish to gain a good understanding of Psychology.

Psychology is an academic and applied discipline involving the scientific study of mental processes and behavior. Psychologists study such phenomena as perception, cognition, emotion, personality, behavior, and interpersonal relationships.

Psychology also refers to the application of such knowledge to various spheres of human activity, including issues related to everyday life (e.g. family, education, and employment) and the treatment of mental health problems. Psychologists attempt to understand the role of these functions in individual and social behavior, while also exploring the underlying physiological and neurological processes.

On successful completion of the course you will receive a recognised level 3 award (Comparable to working at A Level or NVQ Level 3).

### Objectives:

- Develop an understanding of the nature of psychology.
- Examine the way in which human actions can be explained on a number of different levels.
- Distinguish between emotional experience, expression and psychological responses.
- Examine the nature of sensation and perception.
- Understand the process of memory.
- Distinguish between the characteristics of classical and operant conditioning.
- Consider parent - child interaction.
- Evaluate how we form impressions of people.
- Consider the processes of social facilitation and social influence.

### The course is split into the following 8 Units:

#### ➤ **Unit One – Introduction**

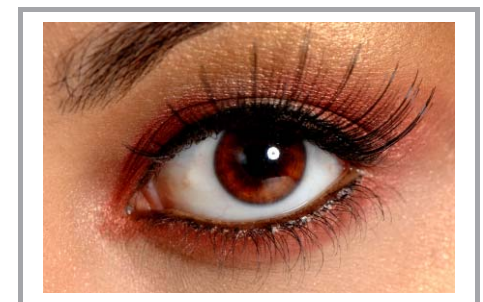
The following topics are covered: What is Psychology?, Different Approaches to Psychology and Research in Psychology.

#### ➤ **Unit Two – Emotion**

The following topics are covered: Signs of Emotion and Theories of Emotion and Stress and Anxiety.

#### ➤ **Unit Three – Perception**

The following topics are covered: Sensation and Perception and Factors Affecting Perception.



**Price:**  
£250.00

**Instalment Options:**  
You can spread the payments for this course over 4 monthly payments. 1 initial payment of £100.00, followed by 3 monthly payments of £50.00.

**Course Format:**  
Paper Based Course Materials

**Assessment:**  
Coursework

**Approximate Study Time:**  
100 Hours of Self Study

➤ **Unit Four – Memory**

The following topics are covered: Why Do We Remember? And Remembering and Forgetting and The Reliability of Memory.

➤ **Unit Five – Learning**

The following topics are covered: Classical and Operant Conditioning, Applications of Classical and Operant Conditioning and Other Kinds of Learning.

➤ **Unit Six - The Development of Social Behaviour**

The following topics are covered: Parent–Child Interaction, Attachment and Separation and Sexual Development and Gender Identity.



➤ **Unit Seven - Social Perception**

The following topics are covered: Parent–Child Interaction, Impressions of People and Prejudice and Discrimination and Reducing Prejudice.

➤ **Unit Eight - Social Influence**

The following topics are covered: Social Pressure on the Individual and Group Norms and Conformity and Conformity to Roles and Obedience.

**Pre-Requirements:**

There are no particular entry requirements.

**Course Duration & Support:**

Students may register at any time and have a full year to complete their studies. You also have access to a personal tutor by mail or email for a 12 month period. As the course is self study you can complete in as little or as long a time as you prefer.

**Assessment:**

You will be assessed on coursework which is detailed in the course materials. Most coursework consists of short paragraph answers to set questions, and a larger essay/case study assignment. Your work can be sent back to your course tutor by email or by post.

**Qualification:**

The award is gained from successfully completed coursework so there is no exam to complete. On successful completion of this course, students will receive a **Level 3 Psychology Award**.

This award has been independently accredited at a level of learning equivalent to level 3 on the National Qualifications Framework (NQF) and is comparable to working at A Level or NVQ Level 3.



The award is issued through NCFE. NCFE is recognised as an awarding body by the qualification regulators ('regulators') for England, Wales and Northern Ireland. The regulators are the Office of the Qualifications and Examinations Regulator (Ofqual) in England, the Department for Children, Education, Lifelong Learning and Skills (DCELLS) in Wales and the Council for Curriculum, Examinations and Assessment (CCEA) in Northern Ireland.