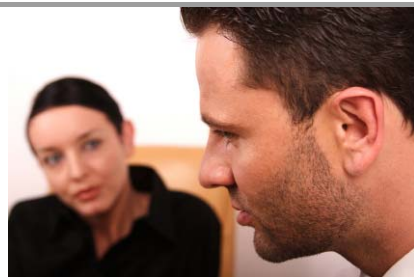


COMMUNITY, MENTAL HEALTH & PSYCHIATRY COURSE – LEVEL 4 AWARD



The **Community, Mental Health and Psychiatry - Level 4 Course** is designed for anyone with an interest in Mental Health, particularly those who wish to become counsellors, therapists, social workers or find employment in other similar roles.

The course covers the main conditions many people currently receiving counselling/psychiatric treatment are diagnosed with, including their causes, symptoms, the diagnostic criteria used by health professionals and the treatment approaches designed for these conditions.

The course also provides students with an understanding of the Mental Health system, the wide range of roles within it and important legislation in place relating to Mental Health, such as the Mental Capacity Act. Such legislation is clearly explained in easily understandable terms. Students are further provided with guidelines on the standards they should aim to achieve when working with clients, in particular ensuring that they understand the importance of listening to their clients and validating their feelings. The course encourages students to form their own opinions using factual evidence to support their answers.

On successful completion of the course you will receive a recognised level 4 award (Comparable to working at NVQ Level 4).

The Course Includes the Following Units:-

➤ **Unit 1 - What is a Mental Health Worker?**

The following topics are covered: Care Co-ordinator; Community Psychiatric Nurse; General Practitioner; Psychologist; Psychiatrist; and Social Worker.

➤ **Unit 2 – Mental Health Advocacy**

The following topics are covered: Independent professional advocacy; Peer or collective advocacy; and Citizen advocacy.

➤ **Unit 3 – The Mental Health Act**

The following topics are covered: Definitions; Section 2; Section 3; Section 4; Section 5; Section 37; Section 41; Section 117; and Section 36.

➤ **Unit 4 – Mental Health Terminology**

The following topics are covered: A-Z of Mental Health Terminology.

Price:
£350.00

Instalment Options:
You can spread the payments for this course over 4 monthly payments. 1 initial payment of £155.00, followed by 3 monthly payments of £65.00.

Course Format:
Paper Based Course Materials

Assessment:
Coursework

Approximate Study Time:
120 Hours of Self Study

➤ **Unit 5 – The Mental Health System**

The following topics are covered: Community mental health team; Outreach team; The child and adolescent mental health services; Day centres; and In-patients.

➤ **Unit 6 – The Human Rights Act**

The following topics are covered: Right to live; Right to a fair trial; Right to freedom of expression; Right to marry; Right to education; and Right to free elections.

➤ **Unit 7 – Classifications**

The following topics are covered: DSM; and ICD.

➤ **Unit 8 – Depression**

The following topics are covered: Explanation; Symptoms; Diagnosis; Who is affected?; and Causes.

➤ **Unit 9 – Eating Disorders**

The following topics are covered: Explanation; Types of Eating Disorders; Symptoms; Diagnosis; Complications; Who is affected?; Causes; and Prevention.

➤ **Unit 10 – Personality Disorders**

The following topics are covered: Explanation; Symptoms; Who is affected?; Common misconceptions and generalisations; Causes; and Prognosis.

➤ **Unit 11 – Schizophrenia**

The following topics are covered: Explanation; Symptoms Diagnosis; Causes; and The facts.

➤ **Unit 12 – Obsessive Compulsive Disorder**

The following topics are covered: Explanation; Symptoms; Diagnosis; Causes; and The facts.

➤ **Unit 13 – Phobia**

The following topics are covered: Social phobia; Specific phobia; and Agoraphobia.

➤ **Unit 14 – Psychosis**

The following topics are covered: Organic psychosis; Brief reaction psychosis; and Drug-induced psychosis.

➤ **Unit 15 – How to Help Someone in a Crisis**

The following topics are covered: Self harm; Suicide Eating distress; and Relationship breakdown.

➤ **Unit 16 – Abuse & Trauma**

The following topics are covered: Explanation; Child abuse; Munchausen by proxy syndrome; Sexual abuse; Ritual abuse; Domestic abuse; Emotional abuse; Physical abuse; Sexual assaults; Police action; Verbal abuse; Elder abuse; and Male abuse.

➤ **Unit 17 – Staying Safe**

The following topics are covered: Leaving abuse.

➤ **Unit 18 – Abuse & the Law**

The following topics are covered: Sexual Offences Act 2003; Domestic Violence, Crime and Victims Bill 2003; Rights of victims; Injunctions; Evidence required; and Court orders.

➤ **Unit 19 – Reporting Abuse**

The following topics are covered: Police action; Before court; Court; After court; Prison; Probation contact; Restorative justice; and Life and relationships.

➤ **Unit 20 – Listening Skills & Validation**

The following topics are covered: Types of listening; Common problems; and Types of validation.

Pre-Requirements:

There are no particular entry requirements.

Course Duration & Support:

Students may register at any time and have a full year to complete their studies. You also have access to a personal tutor by mail or email for a 12 month period. As the course is self study you can complete in as little or as long a time as you prefer.

The course tutor has also set up a forum for all of their students studying Community, Mental Health & Psychiatry and other related courses. This will assist you with your studies, as not only will you get full support from a professional tutor for the duration of the course but you can also get help from and interact with other students. This is a great community for all those students who wish to interact with other students in the same situation as them, and get friendly advice, ideas and comments.

Assessment:

You will be assessed on coursework which is detailed in the course materials. Most coursework consists of short paragraph answers to set questions. Your work can be sent back to your course tutor by email or by post.

Qualification:

The award is gained from your successfully completed coursework so there is no exam to complete.

On successful completion of this course students will be awarded a **Community, Mental Health & Psychiatry Level 4 Award**.

This award has been independently accredited at a level of learning equivalent to level 4 on the National Qualifications Framework (NQF) and is comparable to working at NVQ Level 4.



The award is issued through NCFE. NCFE is recognised as an awarding body by the qualification regulators ('regulators') for England, Wales and Northern Ireland. The regulators are the Office of the Qualifications and Examinations Regulator (Ofqual) in England, the Department for Children, Education, Lifelong Learning and Skills (DCELLS) in Wales and the Council for Curriculum, Examinations and Assessment (CCEA) in Northern Ireland.